

2021 ALBUQUERQUE PUBLIC SCHOOLS CAPITAL MILL LEVY & BOND ELECTION OVERVIEW



Enhancing school security and renovating classrooms, including improving HVAC systems



School Transportation



School Information Technology



Charter School Facilities and Equipment Needs



Improving HVAC systems



Making schools welcoming to all by adding wheelchair ramps and accessible bathrooms



Removing lead from aging pipes to ensure safe drinking water



Purchasing music and art equipment



Fixing leaky roofs

Putting the Health and Safety of APS Students and Staff First!

When will the regular local election be held?

Election Day will be Tuesday, November 2, 2021.

- Absentee voting will begin October 5, 2021.
- Early in-person voting will be October 16-30, 2021.

Who can vote?

All registered voters living within the Albuquerque Public Schools District Boundaries are eligible to vote in the November 2, 2021, Local Election. This includes all of Bernalillo County and The Village of Corrales in Sandoval County.

What is being voted on?

A School Mill Levy & School Bond valued at \$630 million earmarked for Educational Facility upgrades/equipment, brick & mortar construction/design, as well as instructional technology, support Charter School facility/equipment acquisitions, and provide enhanced life, health, and safety for all teachers and students.

What are bonds and mill levies?

Public School General Obligation Bonds and mill levies are ways of financing Capital projects for public schools through property taxes. A "bond" is long-term financing, like a mortgage, and is paid off over a number of years. School districts use the phrase "mill levy" to refer to "pay as you go" financing—the money is spent as property taxes are collected, rather than being used to pay off long-term debts. A "mill" is one one-thousandth of a dollar, and a "levy" is the imposition of a tax, so a "one mill levy" would be a property tax of one dollar on every thousand dollars of taxable property value.

What will a "YES" vote mean to APS students?

A vote of yes will provide money for Educational Technology, Security/Safety as well as Construction/Renovation of new buildings and to make much-needed repairs or improvements at existing schools. Every traditional Public School in the district, as well as every Charter School, will benefit from the passage of the Mill Levy and Bond Election.

What would a "NO" vote mean to students in Albuquerque?

If the November 2, 2021, School Mill Levy/Bond election fails, All Public Schools including Charter Schools will not have the money needed to build schools, renew and renovate our older existing schools, or provide the technology needed for students to compete in a global marketplace.

Will passage of the November 2, 2021, Mill Levy/School Bond Election raise my taxes?

No, there will be no tax increase from the passage of this election, just a continuation of the existing tax rate.



ALBUQUERQUE PUBLIC SCHOOLS

2021 ALBUQUERQUE PUBLIC SCHOOLS CAPITAL MILL LEVY & BOND ELECTION OVERVIEW

Major Projects at a Glance

Major Capital Projects

Project	Total Project Budget
Arroyo del Oso ES School Replacement Construction	\$27,081,185.33
Barcelona ES Classroom Block Construction	\$10,725,493.33
Highland HS Classroom Block Construction	\$27,957,586.67
Hubert Humphrey ES School Construct/Renovations of Admin and Classroom Block Replacement	\$21,914,884.00
M.A. Binford ES Classroom Block Construction	\$9,570,485.33
McKinley MS Classroom Block/Admin Construction	\$14,709,736.00
Sierra Vista ES Classroom Block Construction	\$13,066,666.67
Taylor MS Classroom Block Construction	\$14,872,366.67
Truman MS Classroom Block Construction	\$18,668,178.67
Valle Vista ES Classroom Block Construction	\$11,561,576.00
Zia ES School Replacement Construction	\$18,400,000.00
On-Line School/eCademy Upgrade Improvements	\$1,500,000.00
Harrison MS Design/Construct First Phase of a Planned 3 Phased Total School Replacement Project	\$30,333,333.33
Desert Ridge MS Design/Construct Classroom Addition and Site Infrastructure Improvements	\$13,453,000.00
Van Buren MS Design/Construct First Phase of a Planned 3 Phased Total School Replacement Project	\$30,333,333.33
Whittier ES Design/Construct Classroom Block and Admin Replacement	\$13,612,000.00
La Mesa ES Design/Construct/Renovations and Classroom Block Replacement	\$16,638,000.00
Eldorado HS Design/Construct New Title IX PE/Gym Wing - First 2 Phases of a Planned 5 Phase School Replacement Plan	\$33,600,000.00
Corrales ES Design/Construct and Renovate New Gym, Cafeteria, Playgrounds, and Classroom Block - First Phase of a Planned 2 Phase School Renovation/Refurbishment Project	\$6,380,000.00

Major Districtwide (All Schools) Capital Projects

Capital Project	Total Project Budget
Districtwide Classroom Educational Technology	\$110,000,000.00
Capital Distribution to Albuquerque Area Charter Schools	\$68,617,021.28
Construction Contingencies, Portable Classrooms, and Property Acquisition	\$27,910,000.00
School Security and Safety	\$12,500,000.00
Roofing	\$8,000,000.00
Heating, Ventilation, and Cooling (HVAC)	\$15,000,000.00
General School Upgrades & Special Projects	\$13,500,000.00
Abatement and Site Utilities	\$9,500,000.00
ADA Compliance and Site Circulation Safety	\$4,400,000.00
Water/Energy Conservation and Artificial Turf	\$8,750,000.00
CABQ Physical Education Aquatic Project (Pool) serving La Cueva and Eldorado Clusters	\$2,000,000.00

Putting the Health and Safety of APS Students and Staff First!

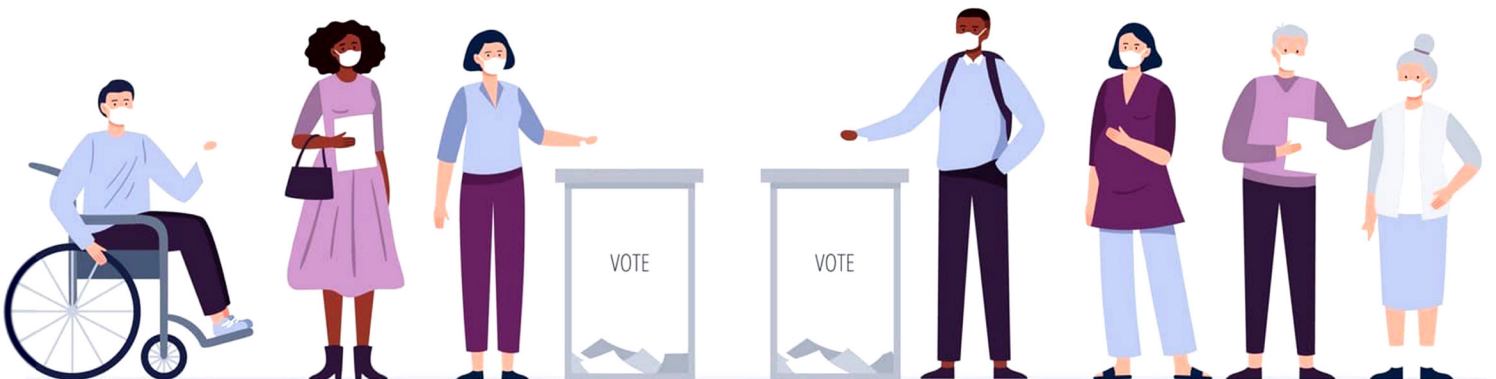
The following two questions will appear on the ballot in the November 2021 Local Election:

General Obligation Bond Question: \$200 million

General Obligation Bond Question:	<p>"Shall the Albuquerque Municipal School District No. 12 be authorized to issue up to \$200,000,000 of general obligation bonds for the purpose of (1) erecting, remodeling, making additions to and furnishing school buildings, (2) purchasing or improving school grounds, (3) purchasing computer software and hardware for student use in public schools, (4) providing matching funds for capital outlay projects funded pursuant to the Public School Capital Outlay Act, or (5) any combination of these purposes?"</p> <div><div>FOR the school district bonds</div><div>AGAINST the school district bonds</div></div>
-----------------------------------	-----------------------------------------------------------------------------------------------------------------------------------------------------------------------------------------------------------------------------------------------------------------------------------------------------------------------------------------------------------------------------------------------------------------------------------------------------------------------------------------------------------------------------------------------------------------------------------------------------------------------------------

Mill Levy Question: \$430 million collected over 6 years

The Public School Buildings Act Tax Question:	<p>"Shall the Albuquerque Municipal School District No. 12 impose a property tax levy of \$3.838 per each \$1,000.00 of net taxable value of residential property and \$4.344 per each \$1,000.00 of net taxable value of non-residential property allocated to the Albuquerque Municipal School District No. 12 for the property tax years 2022, 2023, 2024, 2025, 2026 and 2027 for the purposes of</p> <p>A. erecting, remodeling, making additions to, providing equipment for or furnishing public school buildings;</p> <p>B. payments made pursuant to a financing agreement entered into by a school district or a charter school for the leasing of a building or other real property with an option to purchase for a price that is reduced according to payments made;</p> <p>C. purchasing or improving public school grounds;</p> <p>D. purchasing activity vehicles for transporting students to and from extracurricular school activities; provided that this authorization for expenditure does not apply to school districts with a student MEM greater than sixty thousand;</p> <p>E. administering the projects undertaken pursuant to Subsections A and C of this section, including expenditures for facility maintenance software, project management software, project oversight and district personnel specifically related to administration of projects funded by the Public School Buildings Act; provided that expenditures pursuant to this subsection shall not exceed five percent of the total project costs; and</p> <p>F. purchasing and installing education technology improvements, excluding salary expenses of school district employees, but including tools used in the educational process that constitute learning and administrative resources, and which may also include:</p> <p>(1) satellite, copper and fiber-optic transmission; computer and network connection devices; digital communication equipment, including voice, video and data equipment; servers; switches; portable media devices, such as discs and drives to contain data for electronic storage and playback; and purchase or lease of software licenses or other technologies and services, maintenance, equipment and computer infrastructure information, techniques and tools used to implement technology in schools and related facilities; and</p> <p>(2) improvements, alterations and modifications to, or expansions of, existing buildings or tangible personal property necessary or advisable to house or otherwise accommodate any of the tools listed in this subsection.</p> <div><div>FOR the public school buildings act tax</div><div>AGAINST the public school buildings act tax</div></div>
-----------------------------------------------	--------------------------------------------------------------------------------------------------------------------------------------------------------------------------------------------------------------------------------------------------------------------------------------------------------------------------------------------------------------------------------------------------------------------------------------------------------------------------------------------------------------------------------------------------------------------------------------------------------------------------------------------------------------------------------------------------------------------------------------------------------------------------------------------------------------------------------------------------------------------------------------------------------------------------------------------------------------------------------------------------------------------------------------------------------------------------------------------------------------------------------------------------------------------------------------------------------------------------------------------------------------------------------------------------------------------------------------------------------------------------------------------------------------------------------------------------------------------------------------------------------------------------------------------------------------------------------------------------------------------------------------------------------------------------------------------------------------------------------------------------------------------------------------------------------------------------------------------------------------------------------------------------------------------------------------------------------------------------------------------------------------------------------------------------------------------------------------------------------------------------------------------------------------------------------------------------------------------------------------------------------------------------------------------------------------------------------------------------------------------------------------------------------------------------------------------------------------------------------------------------------------------------------------------------------------------------------------------------------------------------------------------------------------------------------------------------------------------------------------



2021 ALBUQUERQUE PUBLIC SCHOOLS CAPITAL MILL LEVY & BOND ELECTION OVERVIEW

**Putting the Health and Safety
of APS Students and Staff First!**

General Overview:

This bond election directly affects funding for the Albuquerque Public Schools' Capital Strategy Plan beginning in 2021 and continuing through 2027. The current plan focuses on renewing and restoring aging buildings/facility systems, educational and instructional technology as well as enhanced life, health, and safety environments for students and teachers. The Plan will also support capital funding to all Albuquerque Charter Schools (both local and state) and will be used to improve transportation facilities/infrastructure for all students.

The Plan also has strong implications for the local economy, generating close to \$200 Million in construction activity in the first two years. Continued activity will include a steady economic influx into the IT, design, fabrication and construction sectors through 2027. This continued project infusion is extremely important to local current/future educational needs, economic health, and local job prospects.

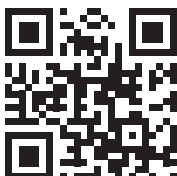
**2021
BOND
ELECTION**



HEALTH & SAFETY

**FOR MORE
INFORMATION
PLEASE VISIT
APS.EDU**

VOTE



**ALBUQUERQUE
PUBLIC SCHOOLS**